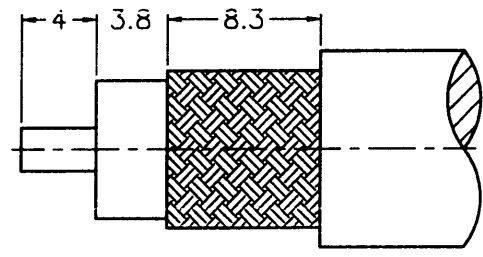
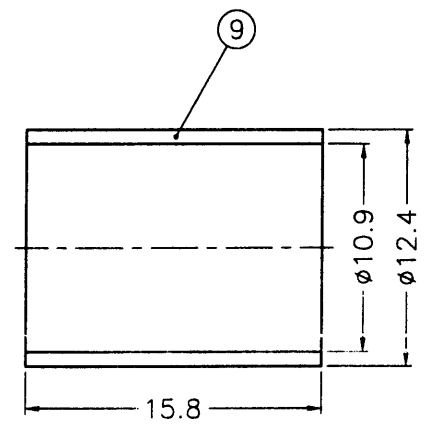
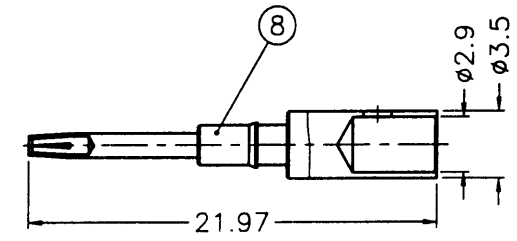


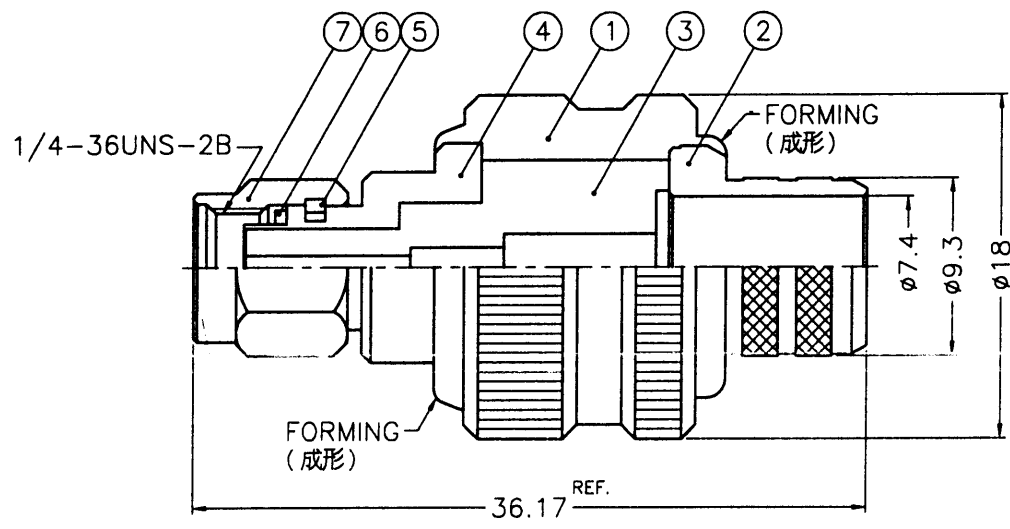
SALES



RECOMMENDED  
CABLE STRIPPING DIM'S  
(建議剝線尺寸)



REVISIONS		
ISS	ZONE	DESCRIPTION\PER REQUEST\DATE



- NOTES: FINISH (PLATING THICKNESS IN MICRO-INCHES)
- BRASS PER QQ-B-626
  - GOLD PL. 3 MIN. THICK OVER NICKEL PL. 100 MIN. THICK OVER COPPER STRIKE
  - BERYLLIUM COPPER PER QQ-C-530
  - GOLD PL. 50 MIN. THICK OVER NICKEL PL. 100 MIN. THICK OVER COPPER STRIKE
  - TEFLON MIL-P-19468
  - JIS H 3250, C 2600

ISSUED  
2002. 5. 28  
R&D

- CRIMPED FERRULE  
HEX. CRIMP SIZE .429"
- CONTACT PIN TO SOLDER

NO.	DESCRIPTION	MATERIAL	FINISH	Q'TY	DRAWING NO.
9	FERRULE	NOTE 6	NOTE 2	1	FR-124/109X158
8	CONTACT PIN	NOTE 3	NOTE 4	1	RSMA1121A1-8-35/29
7	SHELL	NOTE 1	NOTE 2	1	SMA5000-1-C
6	GASKET	SILICONE	RED	1	GS-6/43X06
5	RETAINER RING	NOTE 3	NATURAL	1	SMA5000-4-B
4	BODY	NOTE 1	NOTE 2	1	NM-SMAM1-4
3	INSULATOR	NOTE 5	NATURAL	1	SMA1121A1-3T-50
2	BARREL	NOTE 1	NOTE 2	1	NS000-3-93/74-B
1	HOUSING	NOTE 1	NOTE 2	1	SMA1121A1-1

DIMENSIONS ARE IN MILLIMETERS  
UNLESS OTHERWISE SPECIFIED TOLERANCES  
0.5-6 = ±0.2  
6-30 = ±0.4  
30-120 = ±0.6  
120-315 = ±1  
315-1000 = ±1.6  
1000-2000 = ±2.4

PART NO.	DATE
APPROVED <i>gawcky</i>	05-23-02'
CHECKED <i>Ken</i>	05-23-02'
DRAWN <i>Ken</i>	05-23-02'
FILE NO. F:\DWG\RSMA\1121A1\9913-50\3GT50G	

<b>Amphenol - Kai Jack</b>	
TAINAN TAIWAN	
TITLE	SMA REVERSE POLARITY CRIMP PLUG (FOR BELDEN 9913, 9914, LMR-400)
DRAWING NO.	KJ-RSMA1121A1-3GT50G-9913-50
ITEM NO.	61121AAA93GA5F

7 RD-DR 14546 8